

DESCRIPTION

JW77284D is a synchronous rectifier for Flyback converters. It integrates a 45V power MOSFET that can replace Schottky diode for high efficiency. It turns on the internal MOSFET if the $V_{SW} < -400\text{mV}$ and turns it off before the current from GND to SW is lower than zero.

Company's Logo is Protected, "JW" and "JOULWATT" are Registered Trademarks of JoulWatt technology Co., Ltd.

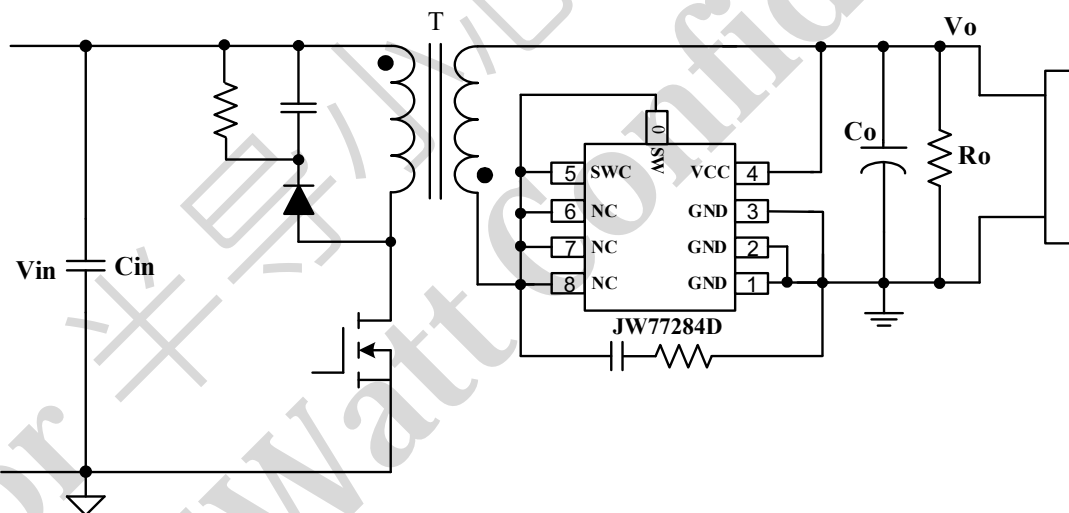
FEATURES

- Supports CCM, DCM and Quasi-Resonant Flyback Converter
- Integrated 12mΩ 45V Power MOSFET
- Supports High-side and Low-side Rectification
- No Need External Power Supply

APPLICATIONS

- Flyback converters
- Adaptors

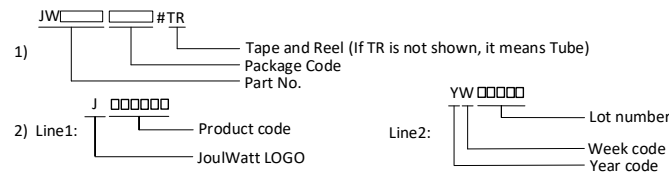
TYPICAL APPLICATION



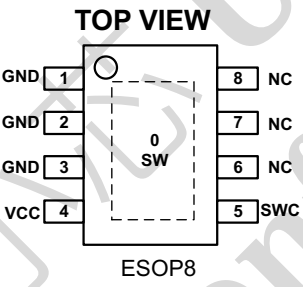
ORDER INFORMATION

DEVICE ¹⁾	PACKAGE	TOP MARKING ²⁾	ENVIRONMENTAL ³⁾
JW77284DESOP#TR	ESOP-8	J77284D YW□□□□□	Green

Notes:



PIN CONFIGURATION



PIN DESCRIPTION

Pin No. ESOP8	Name	Description
0	SW	Internal Power MOSFET Drain
1、2、3	GND	Ground
4	VCC	Power Supply
5	SWC	Sense The Drain Of Power MOSFET
6、7、8	NC	No Connection

IMPORTANT NOTICE

- Joulwatt Technology Co.,Ltd reserves the right to make modifications, enhancements, improvements, corrections or other changes without further notice to this document and any product described herein.
- Any unauthorized redistribution or copy of this document for any purpose is strictly forbidden.
- Joulwatt Technology Co.,Ltd does not warrant or accept any liability whatsoever in respect of any products purchased through unauthorized sales channel.
- JOULWATT TECHNOLOGY CO.,LTD PROVIDES TECHNICAL AND RELIABILITY DATA (INCLUDING DATASHEETS), DESIGN RESOURCES (INCLUDING REFERENCE DESIGNS), APPLICATION OR OTHER DESIGN ADVICE, SAFETY INFORMATION AND OTHER RESOURCES, AND DISCLAIMS ALL WARRANTIES, EXPRESS AND IMPLIED, INCLUDING WITHOUT LIMITATION ANY IMPLIED WARRANTIES OF MERCHANTABILITY, FITNESS FOR A PARTICULAR PURPOSE OR NON-INFRINGEMENT OF THIRD PARTY INTELLECTUAL PROPERTY RIGHTS.

Copyright © 2023 JoulWatt

All rights are reserved by Joulwatt Technology Co.,Ltd