

DESCRIPTION

JW7726HAD is a synchronous rectifier, used for the secondary side rectification of isolation topologies, such as Active Clamp Flyback and CCM/QR/DCM Flyback. JW7726HAD is able to significantly improve the efficiency comparing with the conventional Diode rectifier.

When JW7726HAD senses V_{ds} of MOSFET less than -140mV, it turns on the internal MOSFET. Once the V_{ds} is greater than -6mV, JW7726HAD turns off the internal MOSFET.

JW7726HAD supports multiple operation modes, such as DCM, CrCM, CCM and Quasi-Resonant. By implementing the Joulwatt proprietary technology, JW7726HAD is able to handle CCM operation.

JW7726HAD is available in PVDFN5*6-8 package.

Company's Logo is Protected, "JW" and "JOULWATT" are Registered Trademarks of Joulwatt Technology Co., Ltd.

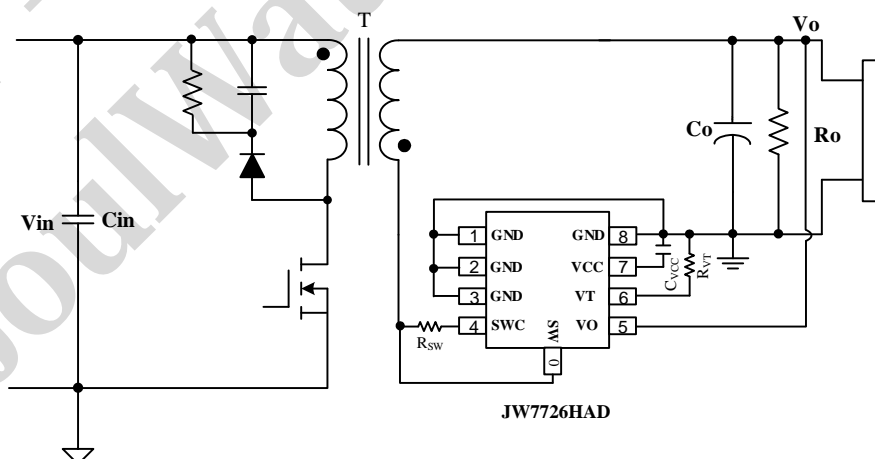
FEATURES

- Supports Active Clamp Flyback, DCM, Quasi-Resonant, and CCM Flyback
- Support High-side and Low-side Rectification
- Output Voltage Directly Supply VCC
- Low Quiescent Current
- Fast Driver Capability for CCM Operation
- PVDFN5*6-8 Package

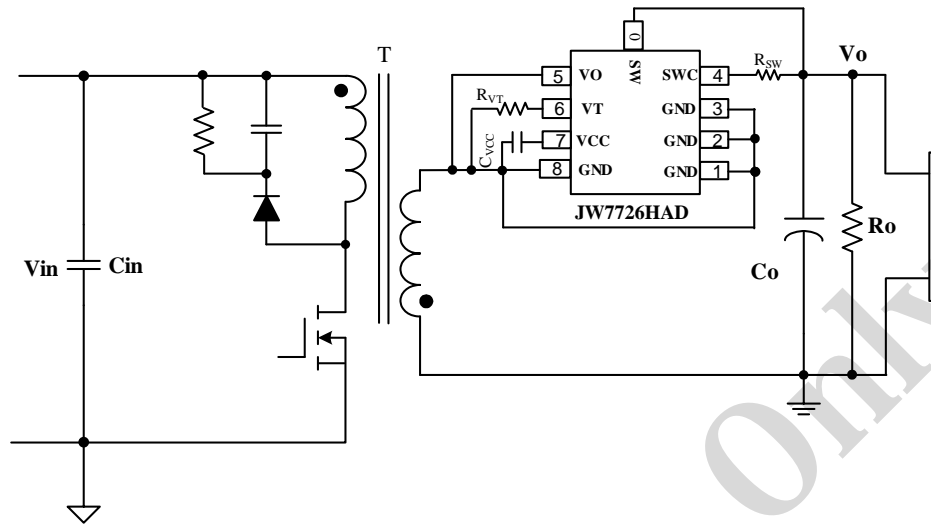
APPLICATIONS

- Active Clamp Flyback and Flyback Converters
- Adaptor
- LCD and PDP TV

TYPICAL APPLICATION



JW7726HAD Typical Application for Low-side

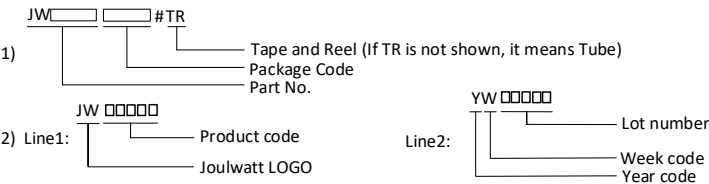


JW7726HAD Typical Application for High-side.

ORDER INFORMATION

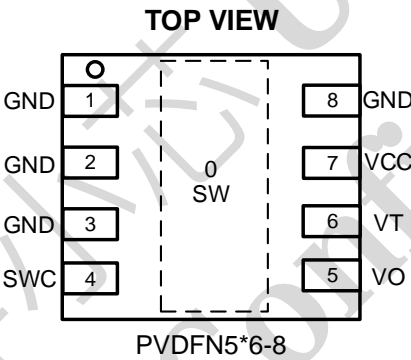
DEVICE ¹⁾	PACKAGE	TOP MARKING ²⁾	ENVIRONMENTAL ³⁾
JW7726HADPVDLQF#TR	PVDFN5*6-8	JW7726HAD YW□□□□□	Green

Notes:



3) All Joulwatt products are packaged with Pb-free and Halogen-free materials and compliant to RoHS standards.

PIN CONFIGURATION



PIN DESCRIPTION

PIN PVDFN5*6-8	NAME	DESCRIPTION
1,2,3,8	GND	Ground.
4	SWC	Internal Power MOSFET Drain Voltage Sensing. Charging to VCC.
5	VO	Output Voltage Sensing and Charging to VCC.
6	VT	Set the Voltage-second Product.
7	VCC	Power Supply. Bypass a Capacitor Between VCC and GND.
0	SW	Internal Power MOSFET Drain.

IMPORTANT NOTICE

- Joulwatt Technology Co.,Ltd reserves the right to make modifications, enhancements, improvements, corrections or other changes without further notice to this document and any product described herein.
- Any unauthorized redistribution or copy of this document for any purpose is strictly forbidden.
- Joulwatt Technology Co.,Ltd does not warrant or accept any liability whatsoever in respect of any products purchased through unauthorized sales channel.
- JOULWATT TECHNOLOGY CO.,LTD PROVIDES TECHNICAL AND RELIABILITY DATA (INCLUDING DATASHEETS), DESIGN RESOURCES (INCLUDING REFERENCE DESIGNS), APPLICATION OR OTHER DESIGN ADVICE, SAFETY INFORMATION AND OTHER RESOURCES, AND DISCLAIMS ALL WARRANTIES, EXPRESS AND IMPLIED, INCLUDING WITHOUT LIMITATION ANY IMPLIED WARRANTIES OF MERCHANTABILITY, FITNESS FOR A PARTICULAR PURPOSE OR NON-INFRINGEMENT OF THIRD PARTY INTELLECTUAL PROPERTY RIGHTS.

Copyright © 2023 JoulWatt

All rights are reserved by Joulwatt Technology Co.,Ltd