

DESCRIPTION

JW[®]7726BL is a synchronous rectifier controller, used for the secondary side rectification of isolation topologies, such as Active Clamp Flyback and CCM/QR/DCM Flyback. By driving an external MOSFET, JW7726BL is able to significantly improve the efficiency comparing with the conventional diode rectifier.

When JW7726BL senses V_{ds} of MOSFET less than -140mV, it turns on the MOSFET. Once the V_{ds} is greater than -6mV, JW7726BL turns off the MOSFET.

JW7726BL supports multiple operation modes, such as DCM, CrCM, CCM and Quasi-Resonant. By implementing the Joulwatt proprietary technology, JW7726BL is able to handle CCM operation.

JW7726BL is available in SOT23-6 package.

Company's Logo is Protected, "JW" and "JOULWATT" are Registered Trademarks of JoulWatt technology Inc.

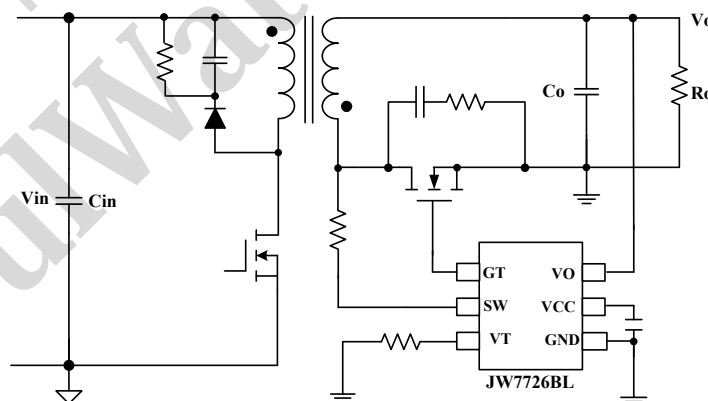
FEATURES

- Supports Active Clamp Flyback, DCM, Quasi-Resonant, and CCM Flyback
- Support High-side and Low-side Rectification
- Output Voltage Directly Supply VCC
- Low Quiescent Current
- Fast Driver Capability for CCM Operation
- SOT23-6 Package

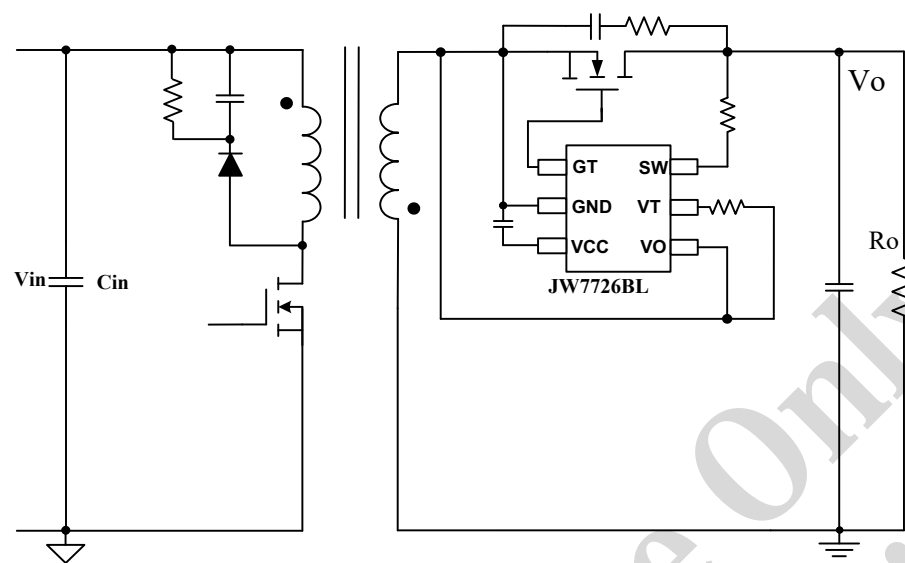
APPLICATIONS

- Active Clamp Flyback and Flyback Converters
- Adaptor
- LCD and PDP TV

TYPICAL APPLICATION



JW7726BL Typical Application for Low-side.



JW7726BL Typical Application for High-side.

ORDER INFORMATION

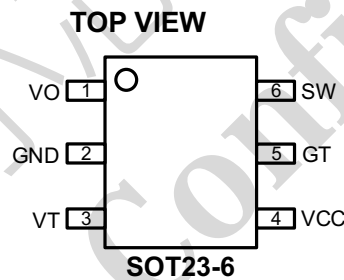
DEVICE ¹⁾	PACKAGE	TOP MARKING ²⁾	ENVIRONMENTAL ³⁾
JW7726BLSOTB#TR	SOT23-6	JWJB□ YW□□□	Green

Notes:

- 1) JW□□#TR
 Tape and Reel (If TR is not shown, it means Tube)
 Package Code
 Part No.
- 2) Line1: JW□□□
 Product code
 Joulwatt LOGO
- Line2: YW□□□
 Lot number
 Week code
 Year code

3) All Joulwatt products are packaged with Pb-free and Halogen-free materials and compliant to RoHS standards.

PIN CONFIGURATION



PIN DESCRIPTION

Part No. SOT23-6	Name	Description
1	VO	Output voltage sensing and charging to VCC.
2	GND	Ground.
3	VT	Set the voltage-second product.
4	VCC	Power supply. Bypass a capacitor between VCC and GND.
5	GT	Drive the external MOSFET.
6	SW	External power MOSFET drain voltage sensing. Charging to VCC.

IMPORTANT NOTICE

- Joulwatt Technology Inc. reserves the right to make modifications, enhancements, improvements, corrections or other changes without further notice to this document and any product described herein.
- Any unauthorized redistribution or copy of this document for any purpose is strictly forbidden.
- Joulwatt Technology Inc. does not warrant or accept any liability whatsoever in respect of any products purchased through unauthorized sales channel.

Copyright © 2020 JW7726BL Incorporated.

All rights are reserved by Joulwatt Technology Inc.